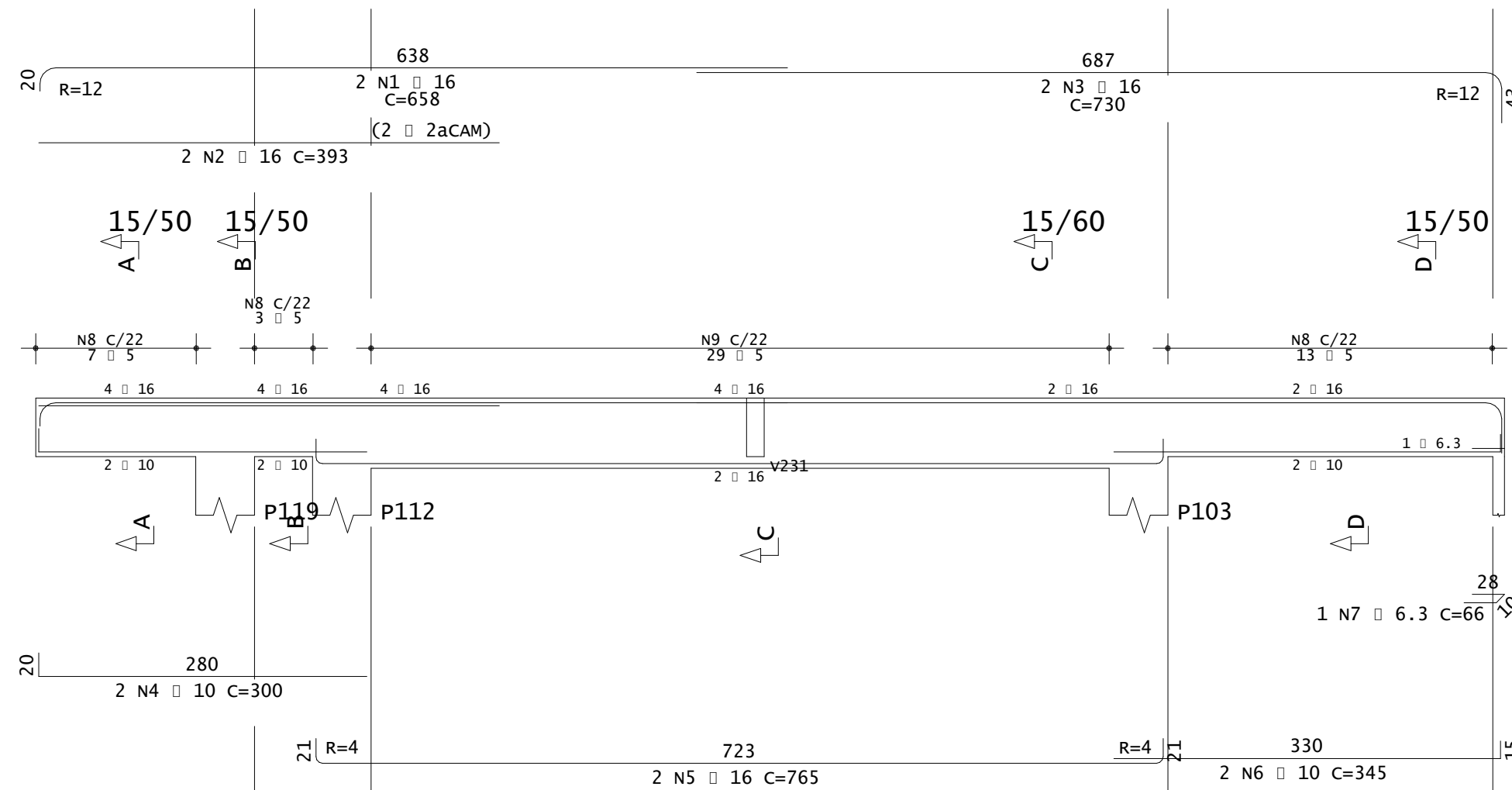
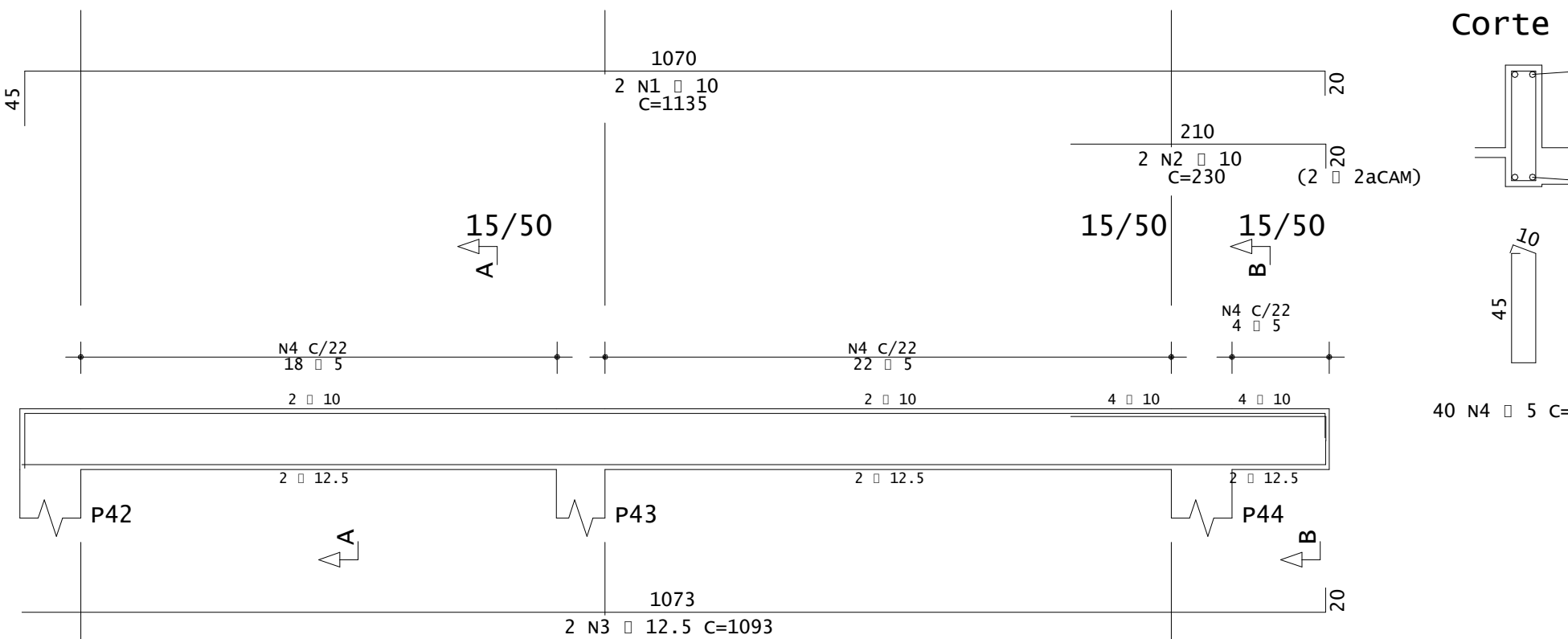


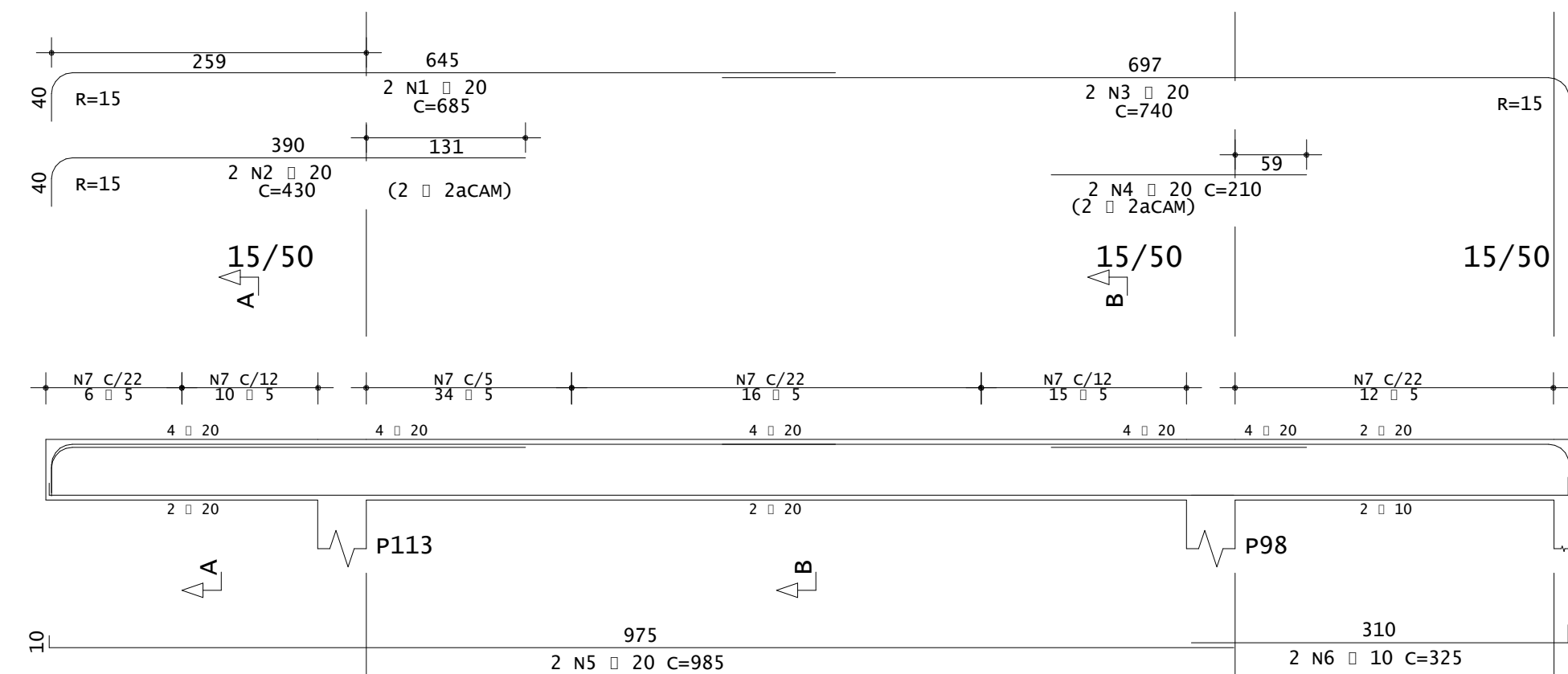
v245



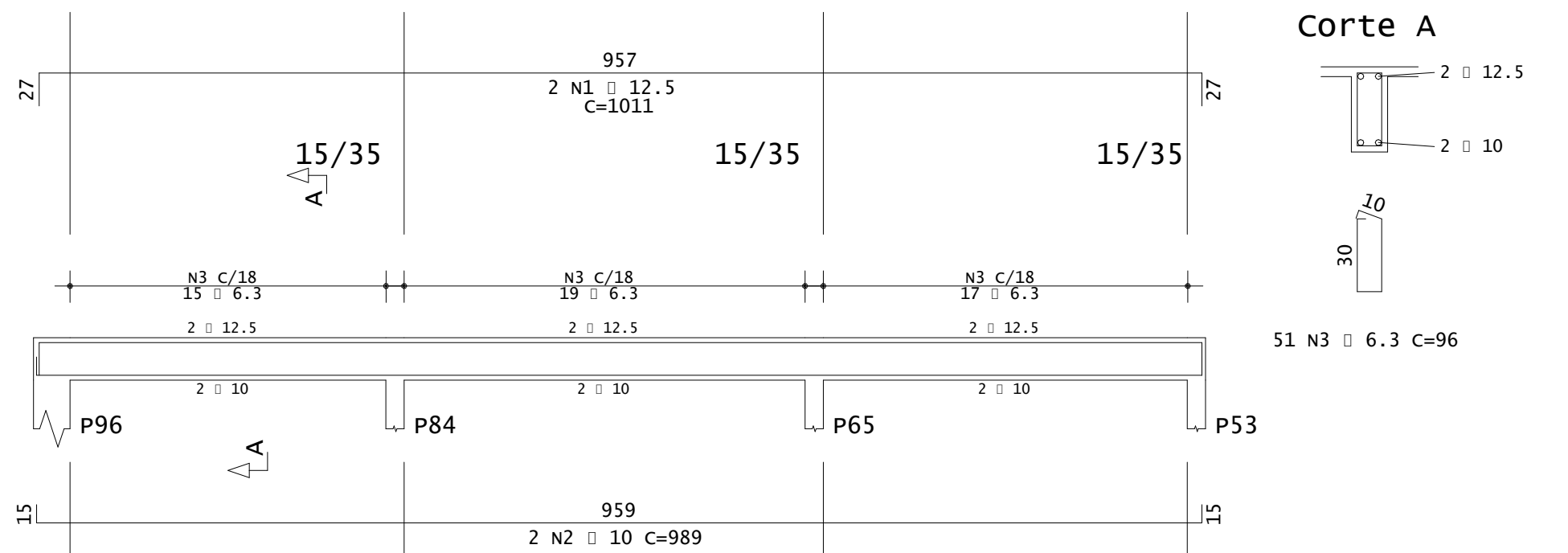
v214



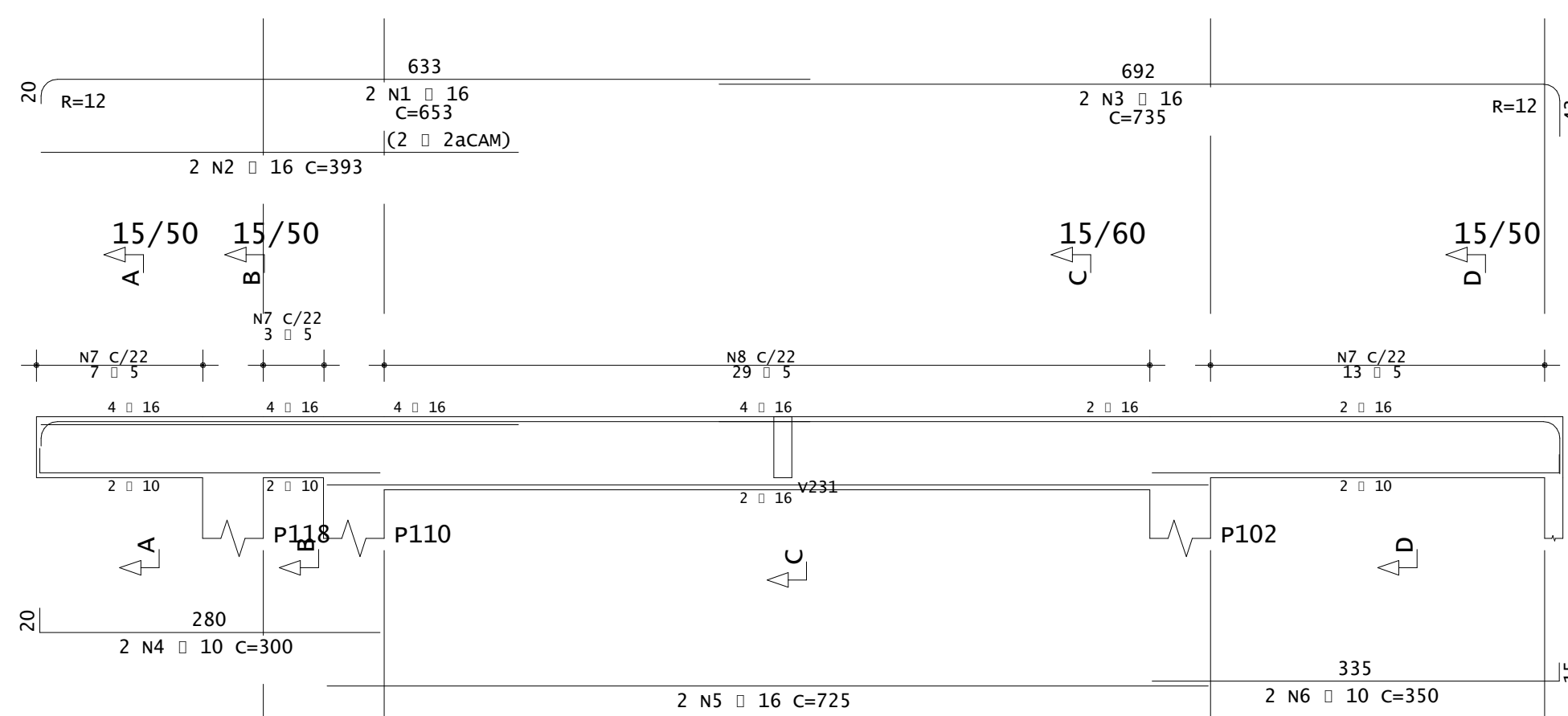
v248



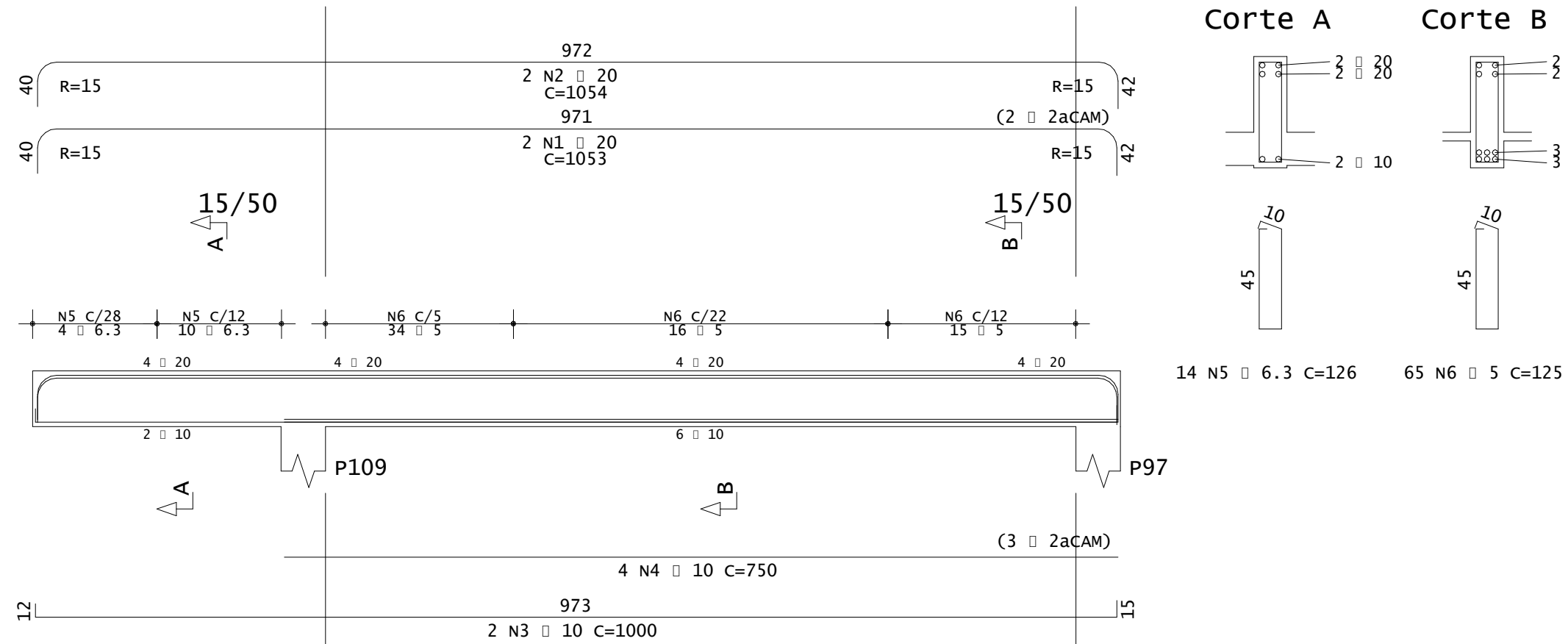
v236



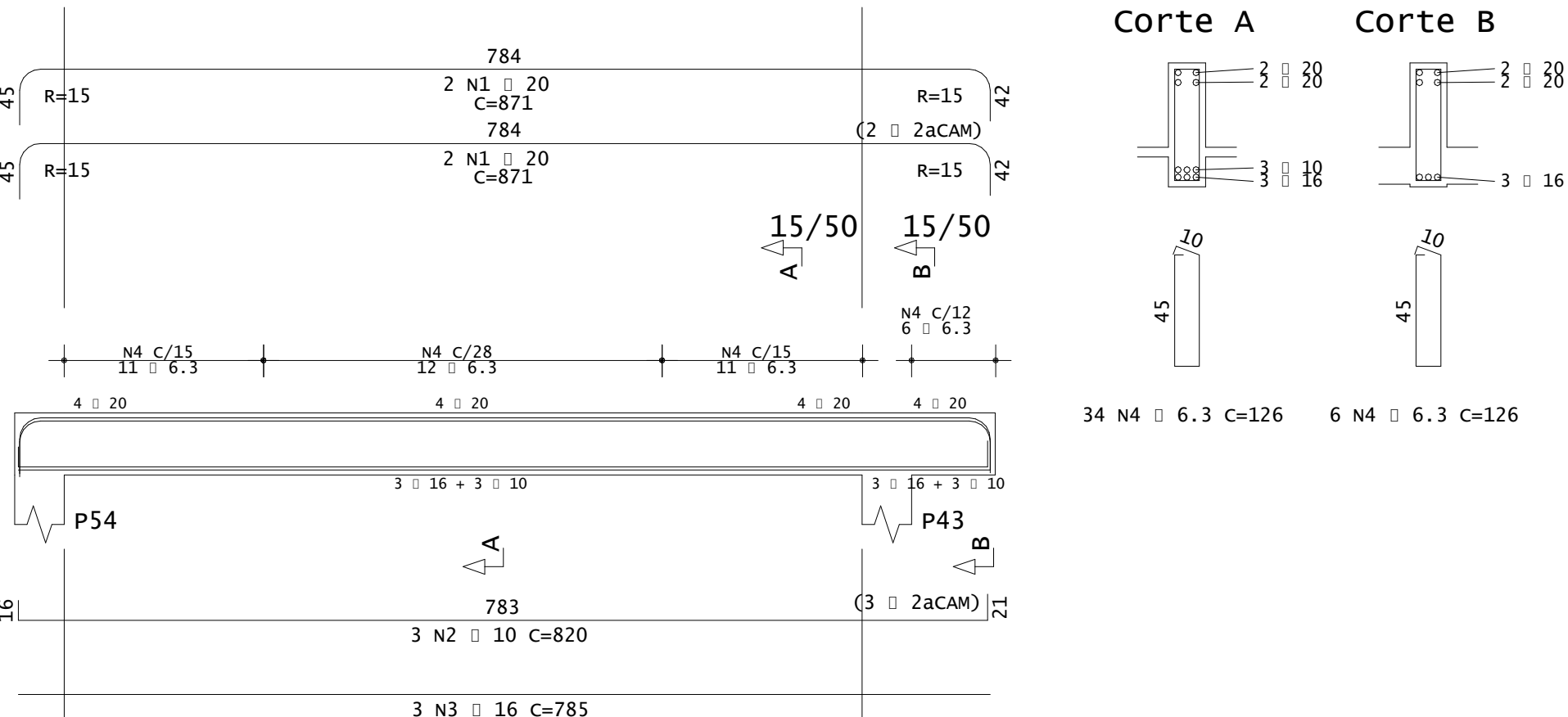
v242



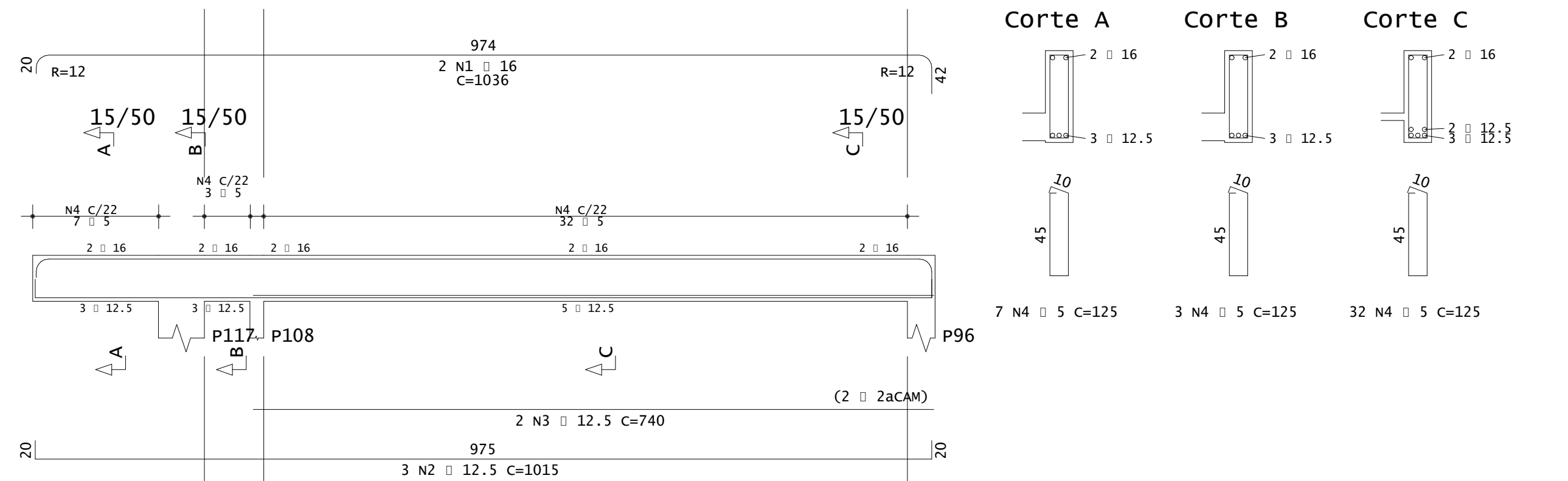
v239



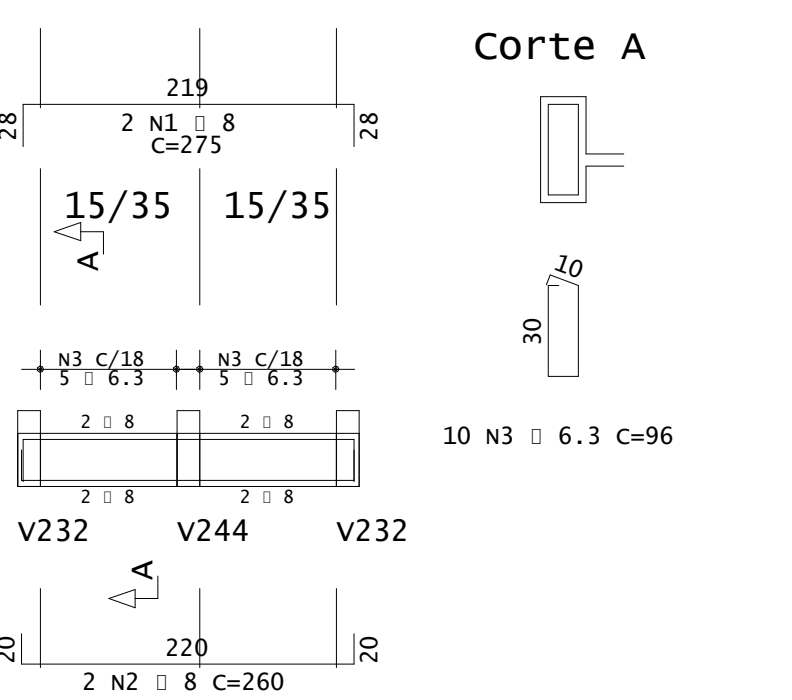
v241



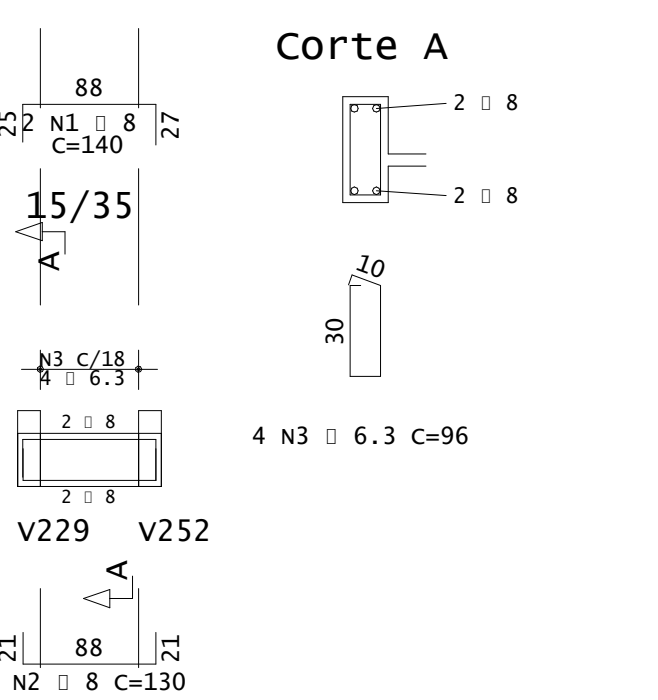
v235



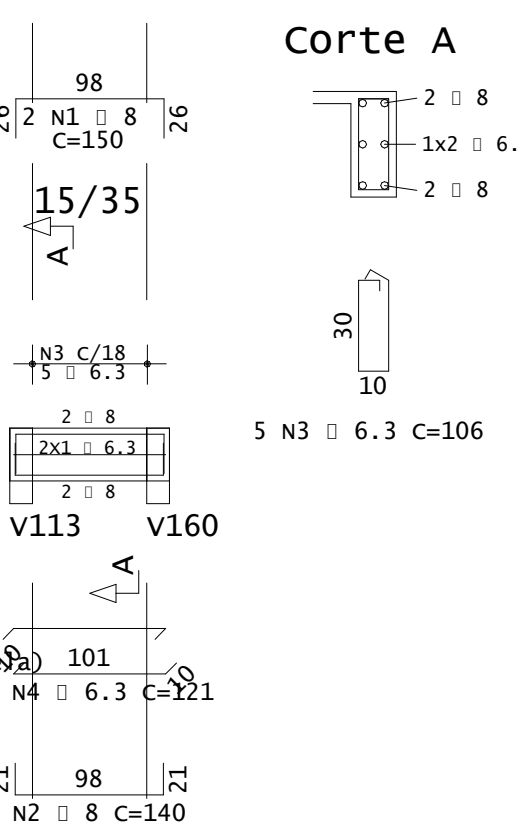
vshaft1



vshaft2



Shaft3



ACO	POS	BIT	QUANT	COMPRIMENTO	TOTAL
cm	cm	cm	cm	cm	cm
V214	SOA	1	10	2	1135
	SOA	2	10	2	230
	SOA	3	12.5	2	1093
	SOA	4	5	44	125
V235	SOA	1	16	2	1036
	SOA	2	12.5	3	1015
	SOA	3	12.5	2	740
	SOA	4	5	42	125
V236	SOA	1	12.5	2	1011
	SOA	2	10	2	989
	SOA	3	6.3	51	96
	SOA	4	5	44	125
V239	SOA	1	20	2	1053
	SOA	2	10	2	1000
	SOA	3	10	2	1000
	SOA	4	6.3	14	126
V241	SOA	1	20	2	821
	SOA	2	10	3	820
	SOA	3	16	3	785
	SOA	4	6.3	40	96
V242	SOA	1	16	2	653
	SOA	2	16	2	393
	SOA	3	10	2	725
	SOA	4	10	2	350
V245	SOA	1	16	2	653
	SOA	2	16	2	393
	SOA	3	10	2	725
	SOA	4	10	2	350
V248	SOA	1	20	2	685
	SOA	2	20	2	430
	SOA	3	20	2	740
	SOA	4	20	2	210
Vshaft1	SOA	1	8	2	275
	SOA	2	8	2	280
	SOA	3	6.3	10	96
	SOA	4	5	95	125
Vshaft2	SOA	1	8	2	275
	SOA	2	8	2	280
	SOA	3	6.3	10	96
	SOA	4	5	95	125
Shaft3	SOA	1	8	2	150
	SOA	2	8	2	140
	SOA	3	6.3	5	106
	SOA	4	6.3	2	121

RESUMO DE AÇO			
ACO	BIT	COMPR	PESO
mm	m		kgf
60A	5	447	69
SOA	6.3	139	34
SOA	8	22	8
SOA	10	334	95
SOA	12.5	87	84
SOA	16	145	229
SOA	20	138	340
Peso Total	60A =		69 kgf
Peso Total	SOA =		790 kgf